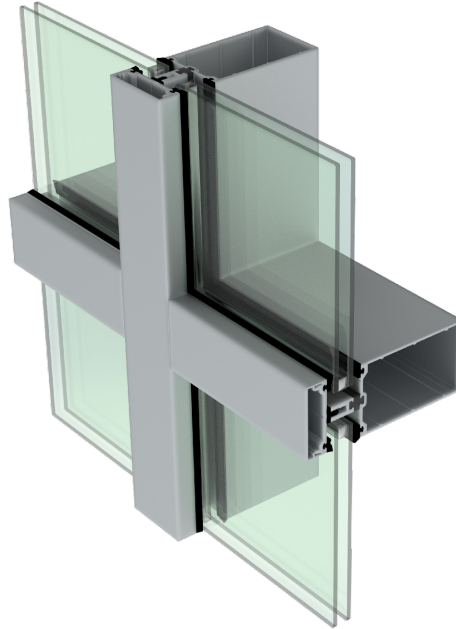


THERMAL, AIR, AND WATER RESULTS - 2 1/2" x 4" BACK SECTION - PART # 2503T



ALUMINUM PRESSURE PLATE

TESTED IN ACCORDANCE WITH - CSA-A440 – NFRC THERMAL SOFTWARE					
THERMAL DATA – 6mm SB60 LOW E #2//6mm CLEAR					
U-VALUE	W/M2-K	BTU/H-FT2F0	SHGC	CI	VT
	1.962	0.345	0.347	N/A	N/A

FIBRE GLASS PRESSURE PLATE

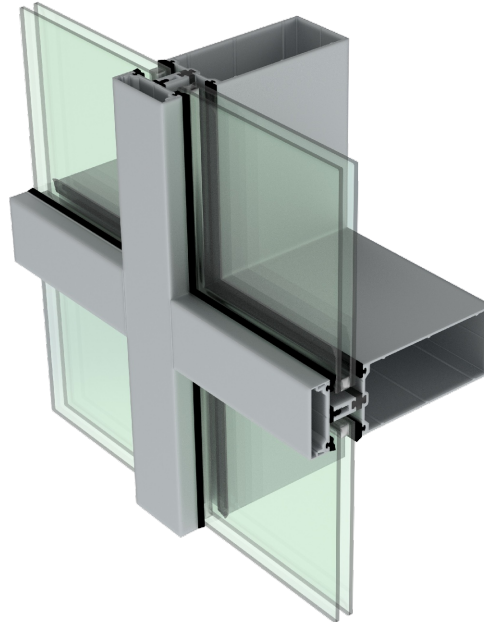
TESTED IN ACCORDANCE WITH - CSA-A440 – NFRC THERMAL SOFTWARE					
THERMAL DATA – 6mm SB60 LOW E #2//6mm CLEAR					
U-VALUE	W/M2-K	BTU/H-FT2F0	SHGC	CI	VT
	1.770	0.311	0.346	N/A	N/A

TESTING IN ACCORDANCE – ASTM E283				
AIR LEAKAGE	TEST PRESSURE	INFILTRATION	EXFILTRATION	OVERALL RESULT
	75PA	0.278 L/S/M2 0.055 CFM/FT2	0.274 L/S/M2 0.054 CFM/FT2	LEVEL A3

TESTING IN ACCORDANCE – ASTM E331			
WATER PENETRATION	TEST PRESSURE	DESIGN PRESSURE	OVERALL RESULT
	510PA (10.50PSF)	3360PA (70.2PSF)	PASS

The above results relate only to the product configuration tested. Every effort has been taken to accurately report the performance of the material, however, due to large amount of input data and reliance from outside sources, it is possible that some errors and/or omissions may occur.

THERMAL, AIR, AND WATER RESULTS - 2" x 5 1/4" BACK SECTION - PART # 2504T



ALUMINUM PRESSURE PLATE

TESTED IN ACCORDANCE WITH - CSA-A440 – NFRC THERMAL SOFTWARE					
THERMAL DATA – 6mm SOLARBAN 70XL LOW E #2//6mm CLEAR					
U-VALUE	W/M2-K	BTU/H-FT2F0	SHGC	CR	VT
	1.920	0.338	0.240	58.3	0.525

FIBRE GLASS PRESSURE PLATE

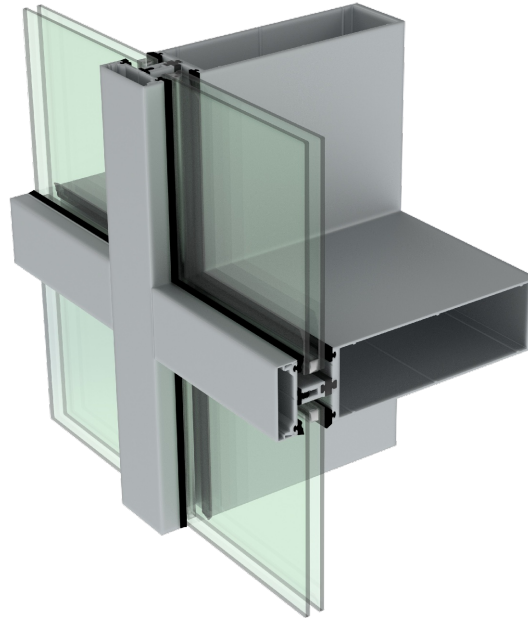
TESTED IN ACCORDANCE WITH - CSA-A440 – NFRC THERMAL SOFTWARE					
THERMAL DATA – 6mm SOLARBAN 70XL LOW E #2//6mm CLEAR					
U-VALUE	W/M2-K	BTU/H-FT2F0	SHGC	CR	VT
	1.728	0.304	0.237	62.8	0.525

TESTING IN ACCORDANCE – ASTM E283				
AIR LEAKAGE	TEST PRESSURE	INFILTRATION	EXFILTRATION	OVERALL RESULT
	75PA	0.278 L/S/M2 0.055 CFM/FT2	0.274 L/S/M2 0.054 CFM/FT2	LEVEL A3

TESTING IN ACCORDANCE – ASTM E331			
WATER PENETRATION	TEST PRESSURE	DESIGN PRESSURE	OVERALL RESULT
	510PA (10.50PSF)	3360PA (70.2PSF)	PASS

The above results relate only to the product configuration tested. Every effort has been taken to accurately report the performance of the material, however, due to large amount of input data and reliance from outside sources, it is possible that some errors and/or omissions may occur.

THERMAL, AIR, AND WATER RESULTS - 2 1/2" x 8" BACK SECTION - PART # 2580T



ALUMINUM PRESSURE PLATE

TESTED IN ACCORDANCE WITH - CSA-A440 – NFRC THERMAL SOFTWARE					
THERMAL DATA – 6mm SUNGUARD SN68 LOW E #2//6mm CLEAR					
U-VALUE	W/M2-K	BTU/H-FT2F0	SHGC	CR	VT
	2.137	0.376	0.306	62.7	0.506

FIBRE GLASS PRESSURE PLATE

TESTED IN ACCORDANCE WITH - CSA-A440 – NFRC THERMAL SOFTWARE					
THERMAL DATA – 6mm SUNGUARD SN68 LOW E #2//6mm CLEAR					
U-VALUE	W/M2-K	BTU/H-FT2F0	SHGC	CR	VT
	1.853	0.326	0.299	65.4	0.506

TESTING IN ACCORDANCE – ASTM E283				
AIR LEAKAGE	TEST PRESSURE	INFILTRATION	EXFILTRATION	OVERALL RESULT
	75PA	0.278 L/S/M2 0.055 CFM/FT2	0.274 L/S/M2 0.054 CFM/FT2	LEVEL A3

TESTING IN ACCORDANCE – ASTM E331			
WATER PENETRATION	TEST PRESSURE	DESIGN PRESSURE	OVERALL RESULT
	510PA (10.50PSF)	3360PA (70.2PSF)	PASS

The above results relate only to the product configuration tested. Every effort has been taken to accurately report the performance of the material, however, due to large amount of input data and reliance from outside sources, it is possible that some errors and/or omissions may occur.