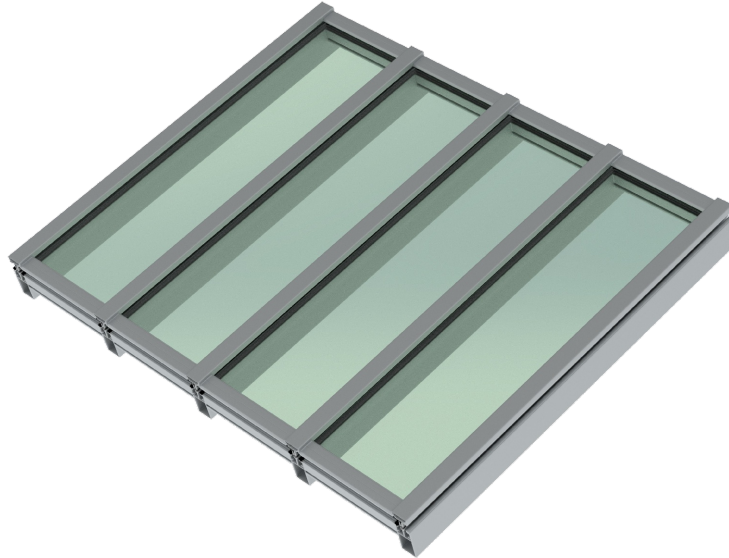




**METRO
ALUMINUM**
Products Ltd.

3400T SERIES

T/B RAFTER-PURLIN SKYLIGHT SYSTEMS
2" (50.8 mm) BASE WIDTH



ALUMINUM PRESSURE PLATE

| | | | | | |
|--|--------|-------------|-------|------|-------|
| TESTED IN ACCORDANCE WITH - CSA-A440 – NFRC THERMAL SOFTWARE | | | | | |
| THERMAL DATA – 6mm SUNGUARD SN68 LOW E #2//6mm CLEAR - (3420T/3405 - 3440T/2405/2406) | | | | | |
| U-VALUE | W/M2-K | BTU/H-FT2F0 | SHGC | CI | VT |
| | 2.558 | 0.450 | 0.308 | 61.1 | 0.485 |
| THERMAL DATA – 6mm SUNGUARD SN68 LOW E #2//6mm CLEAR - (3420T/3405 - 3425T/2405/2406) | | | | | |
| U-VALUE | W/M2-K | BTU/H-FT2F0 | SHGC | CI | VT |
| | 2.536 | 0.446 | 0.307 | 59.3 | 0.483 |
| THERMAL DATA – 6mm SUNGUARD SN68 LOW E #2//6mm CLEAR - (3420T/2405/2406 - 3425T/2405/2406) | | | | | |
| U-VALUE | W/M2-K | BTU/H-FT2F0 | SHGC | CI | VT |
| | 2.560 | 0.451 | 0.304 | 59.7 | 0.488 |
| THERMAL DATA – 6mm SUNGUARD SN68 LOW E #2//6mm CLEAR - (3420T/3405 - 3440T/3405) | | | | | |
| U-VALUE | W/M2-K | BTU/H-FT2F0 | SHGC | CI | VT |
| | 2.551 | 0.450 | 0.313 | 61.1 | 0.481 |

FIBRE GLASS PRESSURE PLATE

| | | | | | |
|--|--------|-------------|-------|------|-------|
| TESTED IN ACCORDANCE WITH - CSA-A440 – NFRC THERMAL SOFTWARE | | | | | |
| THERMAL DATA – 6mm SUNGUARD SN68 LOW E #2//6mm CLEAR - (3420T/2405F/2406 - 3440T/2405F/2406) | | | | | |
| U-VALUE | W/M2-K | BTU/H-FT2F0 | SHGC | CI | VT |
| | 2.370 | 0.417 | 0.299 | 64.2 | 0.488 |
| THERMAL DATA – 6mm SUNGUARD SN68 LOW E #2//6mm CLEAR - (3420T/3405 - 3440T/2405F/2406) | | | | | |
| U-VALUE | W/M2-K | BTU/H-FT2F0 | SHGC | CI | VT |
| | 2.400 | 0.423 | 0.304 | 64.2 | 0.485 |
| THERMAL DATA – 6mm SUNGUARD SN68 LOW E #2//6mm CLEAR - (3420T/3405 - 3425T/2405F/2406) | | | | | |
| U-VALUE | W/M2-K | BTU/H-FT2F0 | SHGC | CI | VT |
| | 2.384 | 0.420 | 0.302 | 63.3 | 0.483 |

The above results relate only to the product configuration tested. Every effort has been taken to accurately report the performance of the material, however, due to large amount of input data and reliance from outside sources, it is possible that some errors and/or omissions may occur.